

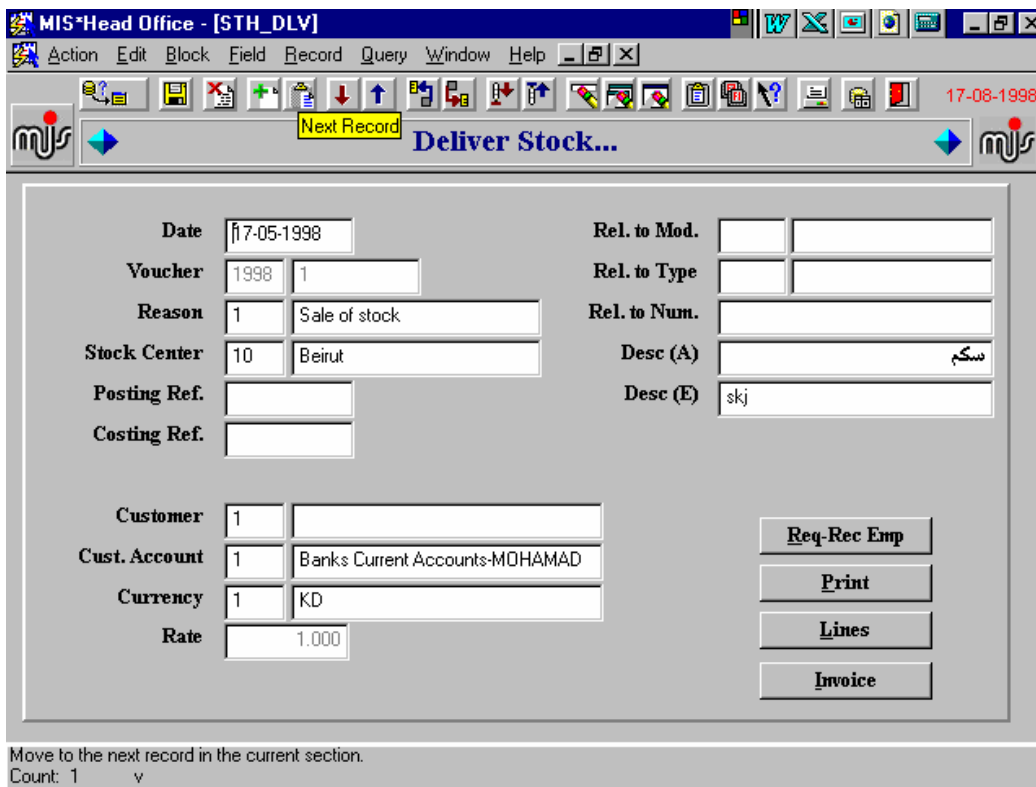
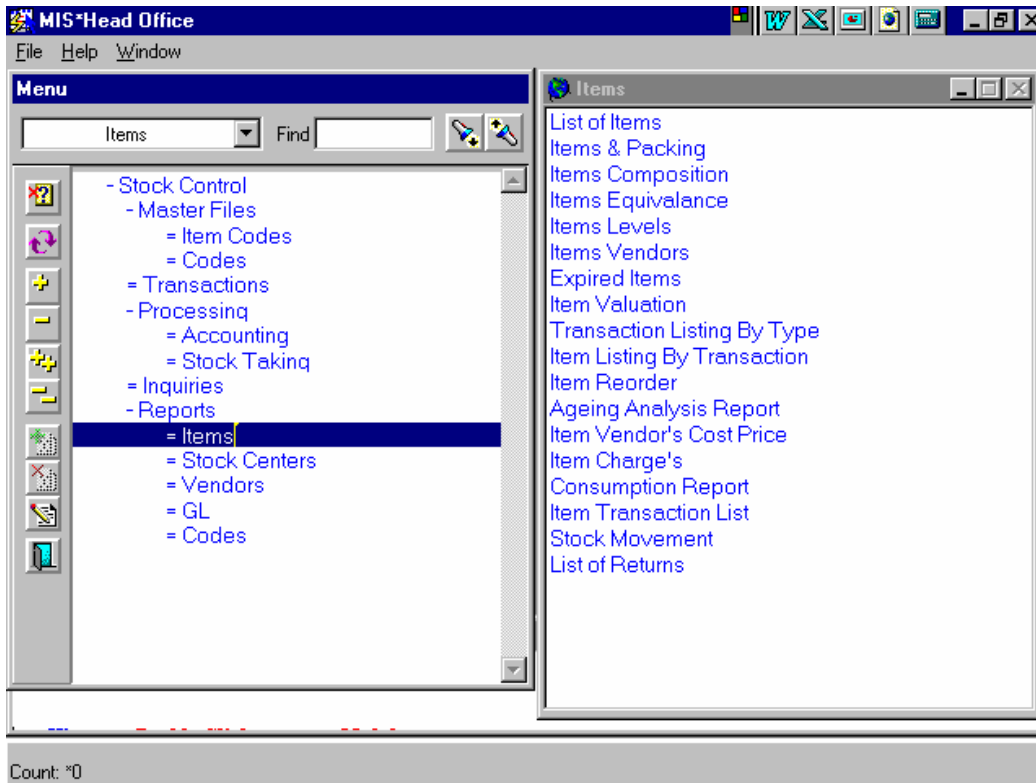
Stock Control (ST)

Control of stock and management of inventory is a hectic job when not assisted by an intelligent yet friendly software. ST provides the means to analyze stock, categorize its items, maintain its operations, and at last but not least, produce informational, analytical, statistical and comparative results.

In fact, we at MIS realised at a very early stage the importance of the stock control for any institute since it represents a huge amount of money, it requires a long time for organization and maintenance, and it has a direct effect on the business. Therefore, we tried to handle all the variations of a standard inventory management system in order to produce a sophisticated module, which does not only keep record of stock quantities and locations, but also advises the user on how to efficiently manage that stock. Among the features of ST , we list the following :

- **ST** supports multiple companies and branches.
- **ST** handles a multi-level item structure, maintaining departments and their groupings, categories and items.
- **ST** supports multiple warehouses, sale centers and showrooms.
- **ST** provides the facility to assign the same code for a warehouse and a sale center, and hence interface to the same accounting structure .
- **ST** maintains the division of warehouses into locations, as well as the division of locations into bins and rows.
- **ST** handles different costs by item and warehouse/sale center.
- **ST** maintains multiple packaging units of one item.
- **ST** interacts with the Purchase Order system.
- **ST** accepts receiving in multiple warehouses.
- **ST** accepts receiving of multiple purchase orders.

- **ST** accepts receiving parts of purchase orders.
- **ST** interacts with GL using trade classes, transaction types, their reason, and warehouses.
- **ST** provides analysis of balances by transaction type, transaction reason, and warehouse/sale centre.
- **ST** provides the utility to store item composition and item equivalence .
- **ST** supports multiple costing methods (average , LIFO , FIFO) which can be assigned at the item level.
- **ST** handles multiple lots with expiry date and batch number, if needed.
- **ST** maintains item levels (Min,Max,Re-order) by warehouse , sale centre.
- **ST** performs automatic re-ordering procedure according to user predefined set-up.



MIS-Head Office - [STH_DLY] 17-08-1998

Deliver Stock...

Apples - Red Each

Item	Pack	Qty.Avl.	Qty Req.	Qty Iss.	Qty	Unt Price	Total Price
001001002000001	1	608.000	0.000		8.000	3.000	24.000

Main Distribution Chart

Count: *1

MIS-Head Office - [STH_DLY] 17-08-1998

Deliver Stock...

Quantity Distribution

Item: Beirut Alloc. Qty. 8.000

Lot Location	Row	Bin	Qty.Avl.	Qty
2993 B201 NREC Beirut Location	12	10	8.000	8.000

Total 8.000

Main Distribution Chart

Count: *1